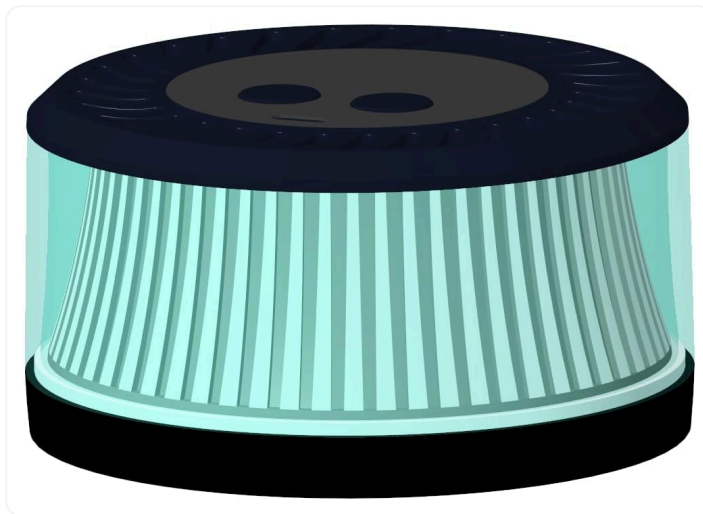


PUFTEM XS-02 Electric Whiskey Smoker Kit

QUICK BUYER GUIDE



Home bartenders who want quick cold smoke for drinks

At a Glance Specs



SMOKE STYLE

Cold smoke infusion



GLASS FIT

Fits glasses up to 3.9 inches



WOOD FLAVORS

Six natural wood options



CONTROLS

Single-touch LCD control



POWER

Built-in rechargeable battery



WHAT'S INCLUDED

14 pieces included



Who It Is For

- ✓ Home bartenders experimenting with cocktails
- ✓ People who host small social gatherings
- ✓ Gift buyers shopping for whiskey enthusiasts



Who It Is Not For

- ✗ Users needing large scale food smoking
- ✗ People who prefer traditional wood fire smoking
- ✗ Anyone requiring multi-level smoke intensity control



Trade Offs to Consider

- Compact size limits smoke coverage
- Cold smoke flavors not suitable for cooking
- Battery operation requires periodic recharging



Users Say

● POSITIVES

- ✓ Simple one-touch operation
- ✓ Visible battery and session time display
- ✓ Includes six wood chip flavors

● COMPLAINTS

- ⚠ Small smoke area fits only narrow glasses
- ⚠ Battery life can require frequent charging
- ⚠ Not intended for heavy food smoking



How It Compares

- Versus handheld smoking guns it's more compact
- Versus tabletop smokers it provides less smoke volume
- Versus wood-only smoking it adds LED ambiance



Choose This If...

- ✓ You want quick cold smoke for drinks
- ✓ You value a compact rechargeable smoker
- ✓ You prefer included variety of wood flavors



Skip This If...

- × You need heavy smoke for large food items
- × You prefer analog manual smoking devices
- × You require adjustable multi level smoke control



Learn More



Read our Review

[Electric Whiskey Smoker Kit Review: Precision, Flavor, and Modern Design for Home Bar Enthusiasts](#)



Watch our Video Review

[PUFTEM Electric Whiskey Smoker Kit Review — Precise Smoke Infusion for Home Bars](#)



Visit our YouTube Channel

[Grill Reviews](#)



Visit our Website

grillreviews.novicelinks.com